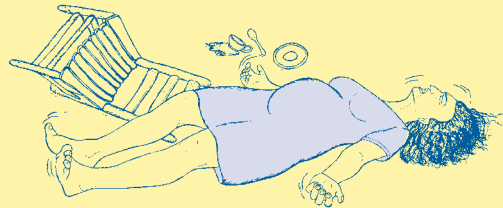


Danger signs of childbirth - Get help!

pre-eclampsia (danger of fits)



- ◆ swollen face, hands and feet
- ◆ high blood pressure
- ◆ blurred vision
- ◆ severe headaches
- ◆ If a woman has a fit, she needs medical help to save her life!



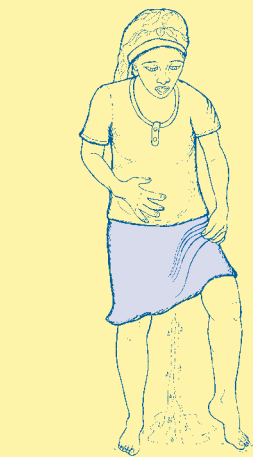
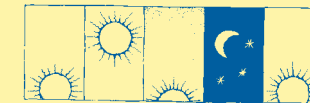
heavy bleeding

- ◆ before labor starts
- ◆ after birth



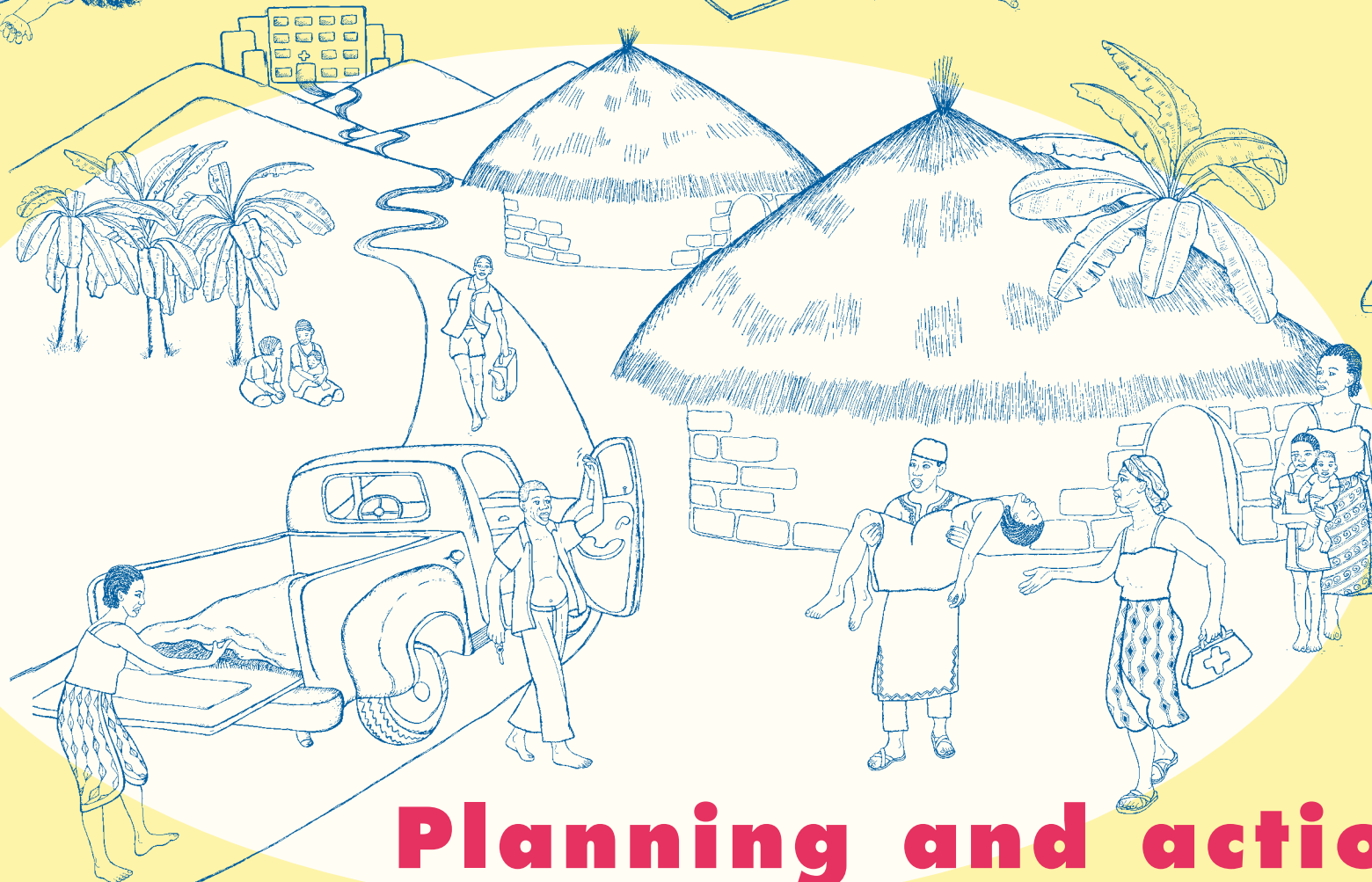
too long labor

This means a strong labor that lasts longer than 1 day and 1 night. If a woman has been pushing hard for more than two hours, she also may need medical help.



The bag of waters breaks early

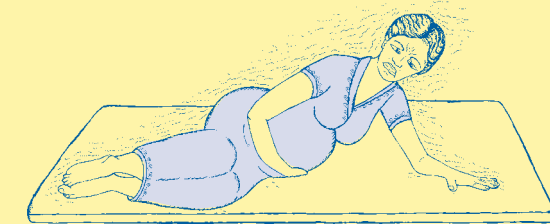
but labor does not start within 24 hours.



infection

Look for these signs:

- ◆ fever
- ◆ chills
- ◆ a bad smell from her vagina



Planning and action can save women's lives.

